

About Us.

S K Industries is a renowned and reliable manufacturer and supplier of Aluminium Anode, Zinc Anode, Magnesium Anode, Lead Tin Alloy Anodes, Cadmium Anodes, Metal Bush, Mmo Coated Titanium Anode, Aluminium Cubes, Aluminum Gravity Die Casting, Aluminium Sand Casting, Gravity Die Casting, Zinc Ingots, Tin Anodes, Sacrificial Anodes, Aluminium Alloy Ingots and Gun Metal Valve Body etc.. We are a distinguished company offering a wide range of aluminum castings, metal anodes, and aluminum cubes to customers at affordable prices. We are maintaining superior quality throughout the process. We are using high-quality raw materials at affordable prices

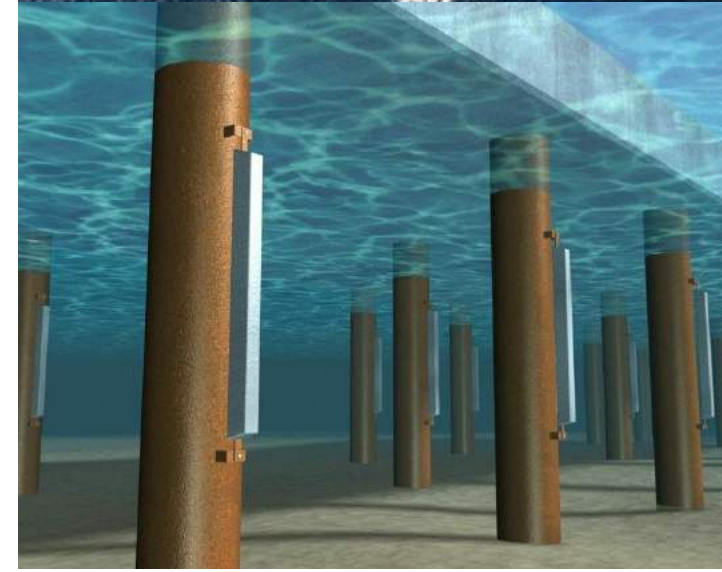


Specialities In Cathodic Products



Why us?

Our products are provided in high-quality castings in various metals. We are offering a wide range of quality raw materials at hassle-free rates. We are using quality raw materials and are manufacturing products in different sizes. Due to our excellent products, we have achieved a remarkable position in the industry. Our products are manufactured by reliable professionals using superior raw materials. We are providing durable and compact designed spare parts that are used in various industries



Sacrificial Aluminium Anodes

Aluminium sacrificial anodes for use onboard ships. These anodes are designed for flushed mounting as well as c clamp mounting.

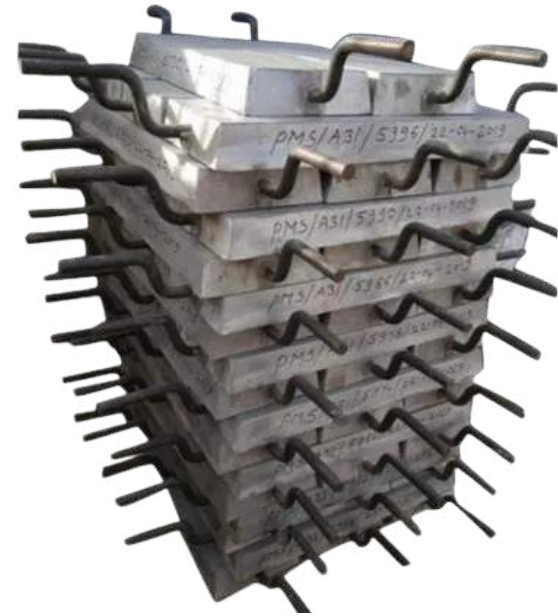
Chemical Composition

Chemical composition of the anodes is as under:

	ASTM418-B	Galvalum III
Zinc	: 2.0 – 5.0 %	1.75 - 5.75%
Copper	: 0.05 % max	0.006 max
Silicon	: 0.13% max	0.08-0.20 %
Iron	: 0.13% max	0.11 % max
Indium	: 0.01 – 0.05% max	0.01 - 0.03%
Aluminium	: Reminder	Reminder

Electric Potential Capacity and potential details of anodes are as under:

Open Circuit Potential : -1.07 V (Ag / AgCl reference cell)
 Anode Capacity : 2550 Ah/kg
 Consumption Rate : 3.4 kg/A-year



H: HEAT
 XXX: HEAT NO (001,002, ETC.)
 YY: YEAR (17,18, ETC.)

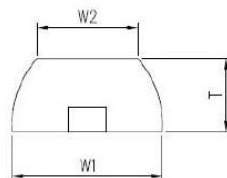
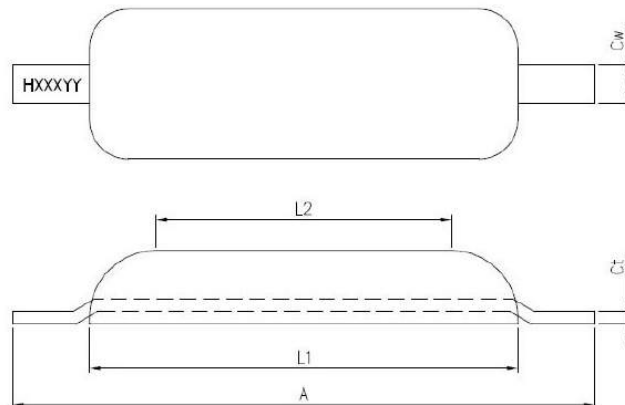
Material : ALUMINIUM ALLOY

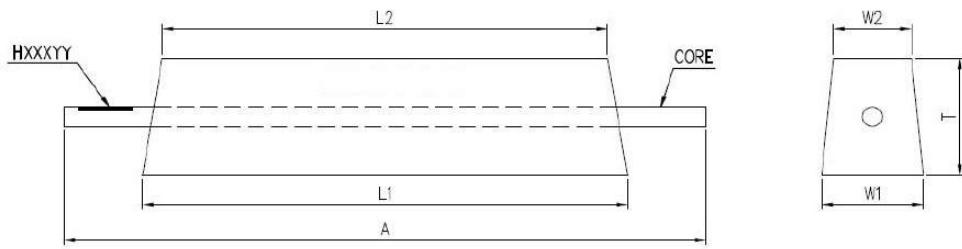
Mounting: Flush Weld-on

TYPE	A (mm)	L1 (mm)	L2 (mm)	W1 (mm)	W2 (mm)	T (mm)	Cw (mm)	Ct (mm)	Nett Wt. Kg.	Gross Wt. Kg.
AHW016	300	200	140	95	75	33	25	8	1.2	1.7
AHW034	350	265	125	150	125	35	40	8	2.7	3.6
AHW056	530	390	285	155	130	36	40	8	4.6	5.9
AHW084	750	580	440	140	115	40	40	8	7.0	8.8
AHW098	650	555	460	137	115	50	40	8	8.5	10.2
AHW119	650	550	470	135	115	65	50	8	10.3	12.3
AHW152	750	590	430	152	120	70	50	8	13.3	15.8

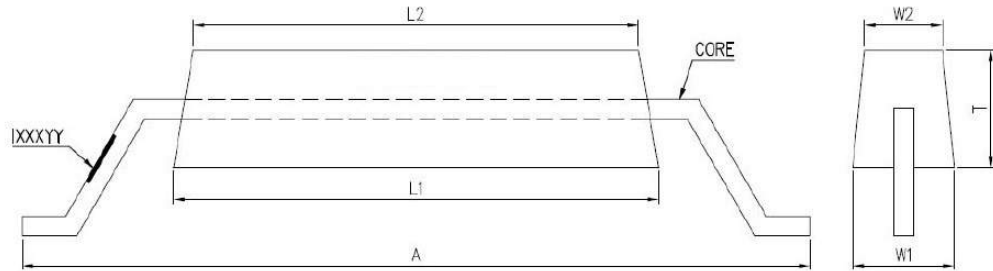
Note:

- All Weights & Dimensions are normal
- Non-standard anodes of other weights or dimensions are also available on request
- We supply Anodes as per customer's requirement



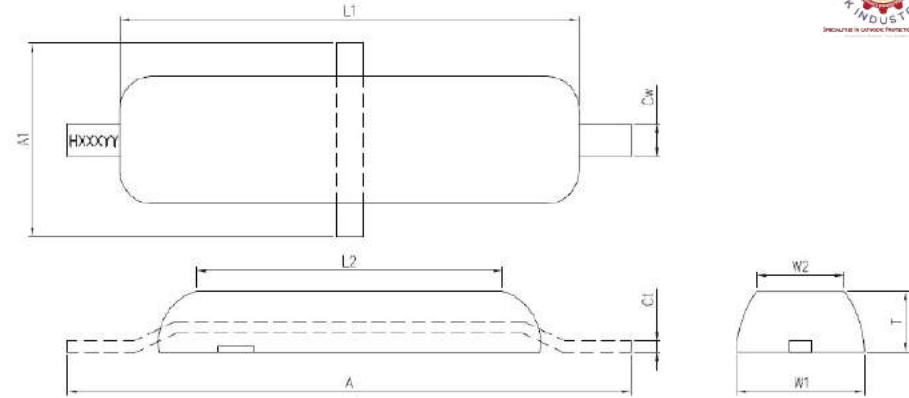


CLAMP MOUNTING



WELD MOUNTING

H: HEAT
XXX: HEAT NO (001,002, ETC.)
YY: YEAR (17,18, ETC.)



H: HEAT
XXX: HEAT NO (001,002, ETC.)
YY: YEAR (17,18, ETC.)

Material : ALUMINIUM ALLOY

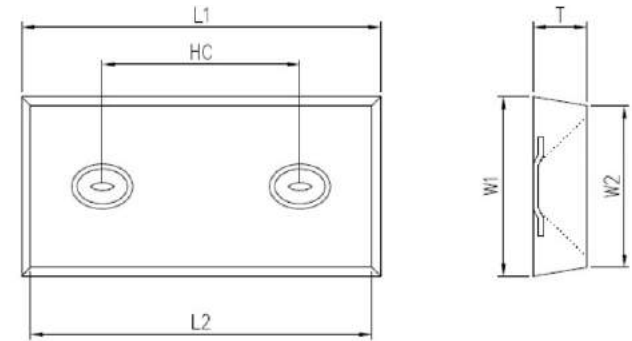
Mounting: Flush Weld-on

TYPE	A (mm)	L1 (mm)	L2 (mm)	W1 (mm)	W2 (mm)	T (mm)	A1 (mm)	Cw (mm)	Ct (mm)	Nett Wt. Kg.	Gross Wt. Kg.
AHW 025	400	300	275	90	55	40	-	25	6	2.0	2.5
AHW 044	425	325	285	160	120	35	-	30	6	3.8	4.4
AHW 072	600	520	400	120	80	40	-	40	6	6.0	7.2
AHW 115	900	800	750	120	90	40	-	40	6	10.5	11.5
AHW 148	680	580	480	150	100	70	-	50	8	12.5	14.8
AHW 163	1020	920	820	150	90	50	-	50	8	13.0	16.3
AHW 243	1020	920	820	160	100	70	260	50	8	21.0	24.3
AHW 333	1020	920	820	160	100	100	260	50	8	30.0	33.3

Material : ALUMINIUM ALLOY

Mounting: Retrofit (C-Clamp W-Weld on)

TYPE	A (mm)	L1 (mm)	L2 (mm)	W1 (mm)	W2 (mm)	T (mm)	CORE (mm)	Nett Wt. Kg.	Gross Wt. Kg.
ATC/W 040	766	310	285	65	50	75	12.5	3.3	4.0
ATC/W 065	765	310	300	85	70	95	12.5	5.9	6.5
ATC/W 077	1070	610	590	65	50	75	12.5	6.8	7.7
ATC/W 096	1225	755	745	65	48	75	12.5	8.5	9.6
ATC/W 117	1800	1515	1480	55	48	50	12.5	10.2	11.7
ATC/W 130	1475	1000	980	65	50	75	12.5	11.7	13.0
ATC/W 137	1675	1215	1190	70	34	70	12.5	12.3	13.7
ATC/W 161	1800	1495	1485	65	55	60	12.5	14.6	16.1
ATC/W 160	1730	1255	1240	62	52	75	12.5	14.5	16.0
ATC/W 190	1985	1520	1490	65	48	75	12.5	17.3	19.0
ATC/W 230	1465	1020	985	85	73	95	16.0	20.1	23.0
ATC/W 280	1720	1260	1235	84	71	95	16.0	24.6	28.0



Material : ALUMINIUM ALLOY

Mounting: Bolt Mounting

TYPE	L1 (mm)	L2 (mm)	W1 (mm)	W2 (mm)	T (mm)	HC (mm)	Nett Wt. Kg.	Gross Wt. Kg.
AHB 014	200	190	100	90	30	110	1.3	1.4
AHB 033	300	282	150	132	31	160	3.0	3.3
AHB 064	300	292	150	142	58	160	6.1	6.4

Note:

- All Weights & Dimensions are normal
- Non-standard anodes of other weights or dimensions are also available on request
- We supply Anodes as per customer's requirement

Sacrificial Zinc Anodes

Zinc sacrificial anodes for use onboard ships. This document describes the specifications and testing procedure of anodes. These anodes are designed for flushed mounting as well as c-clamp mounting.

Chemical Composition Chemical composition of the anodes is as under:

- Aluminium : 0.01 – 0.5 %
- Cadmium : 0.025 – 0.15 %
- Lead : 0.200% max
- Iron : 0.090% max
- Copper : 0.010% max
- Silicon : 0.005% max
- Zinc : Remainder

Electric Potential Capacity and potential details of anodes are as under:

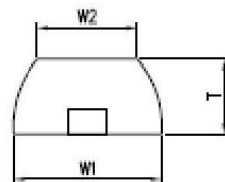
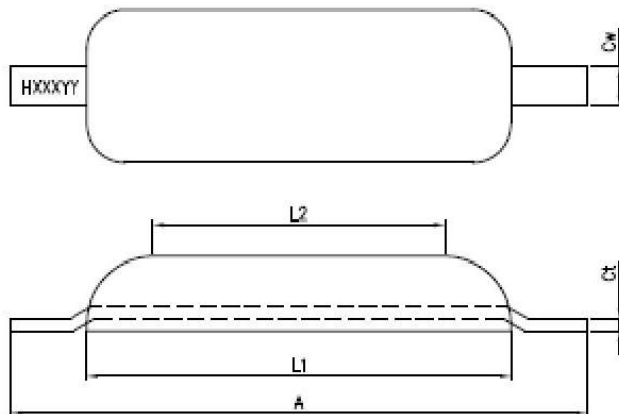
Open Circuit Potential : -0.95 V (Ag / AgCl reference cell)

Anode Capacity : 780 Ah/kg

Consumption Rate : 11.25 kg/A-year



H: HEAT
XXX: HEAT NO (001,002, ETC.)
YY: YEAR (17,18, ETC.)



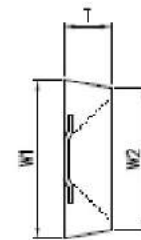
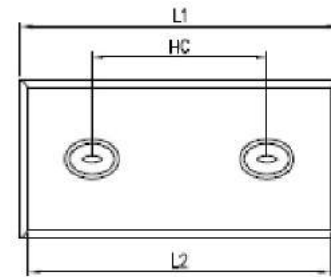
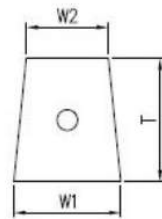
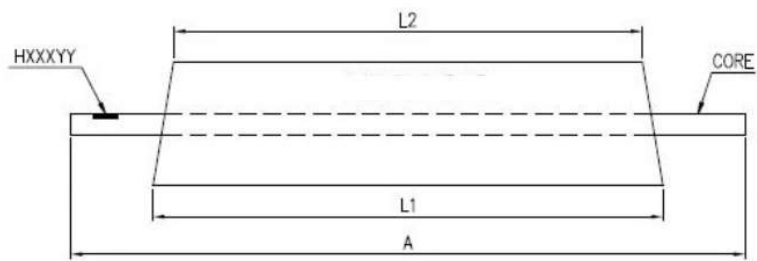
material : ZINC ALLOY

Mounting: Flush Weld-on

TYPE	A (mm)	L1 (mm)	L2 (mm)	W1 (mm)	W2 (mm)	T (mm)	Cw (mm)	Ct (mm)	Nett Wt. Kg.	Gross Wt. Kg.
ZHW035	300	200	140	97	75	33	25	8	3.2	3.7
ZHW078	350	265	125	150	125	35	40	8	7.1	8.0
ZHW130	530	390	265	155	130	35	40	8	12.0	13.3
ZHW286	650	550	470	135	115	65	50	8	27.0	29.0

Note:

- All Weights & Dimensions are normal
- Non-standard anodes of other weights or dimensions are also available on request
- We supply Anodes as per customer's requirement

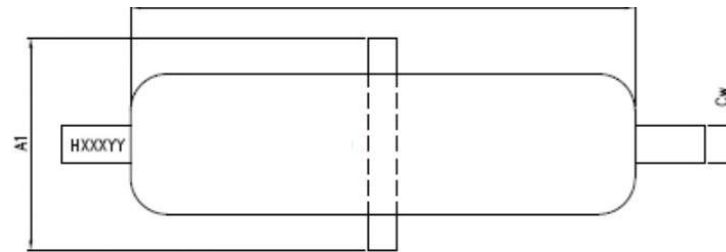
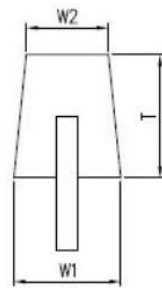
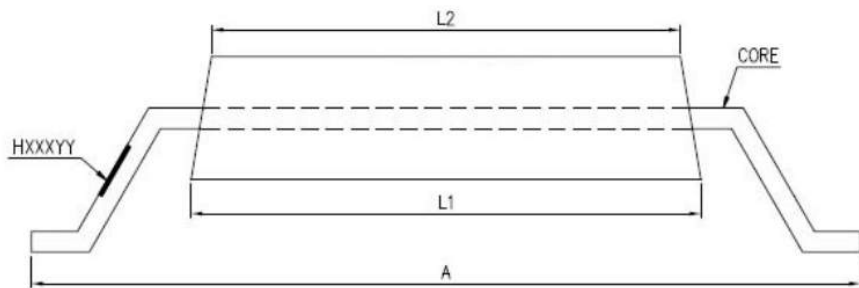


CLAMP MOUNTING

Material : ZINC ALLOY

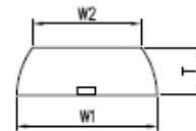
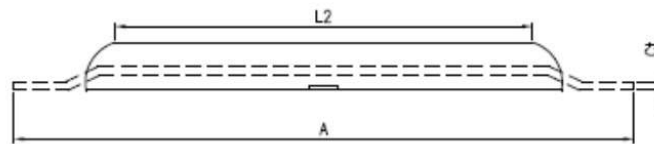
Mounting: Bolt Mounting

TYPE	L1 (mm)	L2 (mm)	W1 (mm)	W2 (mm)	T (mm)	HC (mm)	Nett Wt. Kg.	Gross Wt. Kg.
ZHB 036	200	190	100	90	30	110	3.5	3.6
ZHB 073	300	292	150	142	25	160	7.0	7.3
ZHB 083	300	282	150	132	31	160	8.0	8.3
ZHB 120	300	290	150	140	43	160	11.7	12.0



WELD MOUNTING

H: HEAT
XXX: HEAT NO (001,002,
YY: YEAR (17,18, ETC.))



H: HEAT
XXX: HEAT NO (001,002, ETC.)
YY: YEAR (17,18, ETC.)

Material : ZINC ALLOY

Mounting: Retrofit (C-Clamp W Weld-on)

TYPE	A (mm)	L1 (mm)	L2 (mm)	W1 (mm)	W2 (mm)	T (mm)	CORE (mm)	Nett Wt. Kg.	Gross Wt. Kg.
ZTC/W 094	766	310	285	65	50	75	12.5	8.7	9.4
ZTC/W 161	765	310	300	85	70	95	12.5	15.5	16.1
ZTC/W 188	1070	610	590	65	50	75	12.5	17.9	18.8
ZTC/W 234	1225	755	745	65	48	75	12.5	22.3	23.4
ZTC/W 320	1475	1000	980	65	50	75	12.5	30.7	32.0
ZTC/W 337	1675	1215	1190	70	34	70	12.5	32.3	33.7
ZTC/W 396	1730	1255	1240	62	52	75	12.5	38.1	39.6

Material : ZINC ALLOY

Mounting: Flush Weld-on

TYPE	A (mm)	L1 (mm)	L2 (mm)	W1 (mm)	W2 (mm)	T (mm)	A1 (mm)	Cw (mm)	Ct (mm)	Nett Wt. Kg.	Gross Wt. Kg.
ZHW 043	320	220	180	115	75	30	-	25	6	3.9	4.3
ZHW 055	400	300	275	90	65	40	-	25	6	5.0	5.5
ZHW 106	425	325	285	160	120	35	-	30	6	10.0	10.6
ZHW 124	565	465	400	110	80	40	-	40	6	11.3	12.4
ZHW 160	600	520	400	120	80	40	-	40	6	14.8	16.0
ZHW 200	685	585	540	120	80	55	-	40	8	18.5	20.0
ZHW 260	900	800	750	120	90	40	-	40	6	24.0	26.0
ZHW 353	680	580	480	150	100	70	-	50	8	33.0	35.3
ZHW 375	1020	920	820	150	90	50	-	50	8	34.2	37.5

Note:

- All Weights & Dimensions are normal
- Non-standard anodes of other weights or dimensions are also available on request
- We supply Anodes as per customer's requirement



Prepacked Zinc Anodes

Zinc Anodes are cast from a high purity zinc alloy to ensure an even corrosion pattern, reliable electrical efficiency and long working life.

The zinc alloy is in accordance with the ASTM B-418 specifications.

Anodes shall conform to ASTM B 418, and shall be a pre-packaged zinc alloy ingot of the following chemical composition:

ASTM-B-418

TYPE II (Soil resistivity <1000ohm-cm)

Fe: 0.0014% Max.

Pb: 0.003% Max.

Cu: 0.002% Max.

Al: 0.005% Max.

Cd: 0.003% Max.

Zn: Remainder

Electrical properties: Anode

Potential: -1.10 Volts

Ampere

hours / Kg: 780 (min.)

Prepacked Magnesium Anodes

Magnesium Anode is the most common material used as sacrificial anode in cathodic protection system r chemical composition.

(a) High Potential Magnesium Anode

(b) Low potential Magnesium Anode Based on the soil condition choice of type of anode is done.

Both the type of Anode has different open circuit potential. Magnesium Anode comes into different shape and size like Cylindrical, Rectangular shape and few more

Chemical Composition:

Parameter	High Potential	Low Potential
Iron (Fe)	0.03% max	-
Aluminum (Al)	0.01% max	5.3 – 6.7%
Manganese (Mn)	0.5 – 1.3%	0.15 – 0.7%
Copper (Cu)	0.02% max	0.02% max
Nickel	0.001% max	0.002% max
Silicon (Si)	0.05% max	0.1% max
Zinc (Zn)		2.5 – 3.5%
Other	0.3% max	0.003% max
Magnesium (Mg)	Balance	Balance

Note:

- All Weights & Dimensions are normal
- Non-standard anodes of other weights or dimensions are also available on request
- We supply Anodes as per customer's requirement

Sr. No	Dimension	Weight
1.	43 x 43 x 400 mm long	5 kg approx
2.	43 X43 X 600 mm long	7.7 kg approx
3.	43 X 43 X 750 mm long	10 kg approx
4.	43 X 43 X 1500 mm long	20 kg approx

Sr. No	Dimension	Weight
1	Dia 80 X 225 mm long	2 kg approx
2	Dia 80 X 550 mm long	5 kg approx
3	Dia 80 X 900 mm long	7.6 to 8.0 kg
4	Dia 125 X 925 mm long	20 kg approx
5	Dia 90 X 900 mm long	10 kg approx
6	76 x 76 x 500 mm long	5 kg approx
7	85 X 85 X 800 mm long	10 kg approx
8	85 X 85 X 1100 mm long	15 kg approx
9	Dia 167 x 670 mm long	27.2 kg approx

Concrete Zinc Anodes / Galvashield Anodes / Embedded Zinc Anodes

SK INDUSTRIES is the original embedded galvanic anode for concrete repairs. SKI range has been protecting structures around the world. The anode units are alkali-activated with an internal pH of 14 or greater to keep the zinc active over the life of the anode and are non-corrosive to reinforcing steel. Once installed, the zinc anode corrodes preferentially to the adjacent reinforcing steel to provide galvanic corrosion prevention or corrosion control. SKI Anodes are classified as Type 1 Anodes – embedded in concrete repairs. SKI anodes improve the durability of concrete repairs by providing targeted protection where it is needed the most, at the interface between new and old concrete.

Applications:
 • Patch repairs Bridge widening Joints between new/existing concrete Slab replacement Expansion joint repair Pre-stressed concrete Post-tensioning anchors
 Repair of epoxy-coated rebar Type 1 Anodes for Concrete Repair Type A

- Alkali Activated Type H
- Halide Salt Activated Class P
- Corrosion Prevention SKI(60g)
- SKI (60g) SKI VP Range Class C
- Corrosion Control SKI (100g)
- SKI (160g) SKI VP Range

- Chemical Compositions:**
- Aluminium : 0.005 % max
 - Cadmium : 0.003 %
 - Lead : 0.003 % max
 - Iron : 0.0014 % max
 - Copper : 0.002 % max
 - Others :
 - Zinc : Remainder



MMO Coated Titanium Anodes

Substrate Pure titanium Grade1 or Grade2 Surface Will be coated with Ruthenium and Iridium,platinum,PbO2 Specification according to customer's drawing

Types of Anodes with MMO (Mixed Metal Oxides) coatings

- 1)Ruthenium-Iridium titanium anode
- 2)Ruthenium-Iridium-stannum titanium anode
- 3)Iridium-Tantalum titanium anode
- 4)Ruthenium-titanium anode
- 5)Platinum titanium anode
- 6)Lead dioxide titanium anode

Manufacturing processes

- 1)Pre-treatment: choosing right material, cutting ,welding accordingly , annealing ,cleansing ,acid etching
- 2) Preparing noble metal: be made up in proportion of mol according to customer's application
- 3) Brush painting :coated by 12 to15 times
- 4) thermal decomposition of oxidation

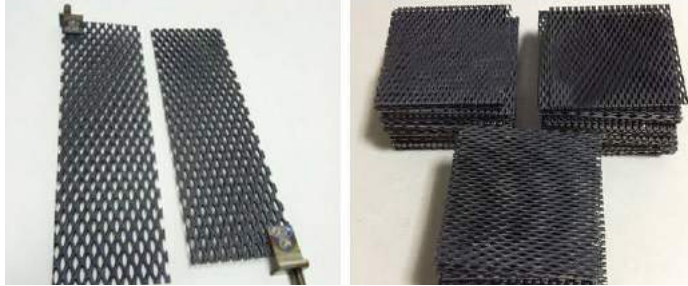
Features

- 1) Stable working ability under high current density & Voltage
- 2) High electrolysis efficiency
- 3) Stable electrolysis ability
- 4) High anti-corrosion property
- 5) The matrix can be recycled and recoated with MMO for reuse
- 6) Long working life etc.

Application

Water ionizer, alkaline & Acidic water production, deionized water in cosmetic, disinfection, clean etc.
 For sodium hypochlorite disinfecting machine, titanium electrode for spot ozonolysis, titanium electrode for sewage treatment and cathodic protection.

- Note:**
- All Weights & Dimensions are normal
 - Non-standard anodes of other weights or dimensions are also available on request
 - We supply Anodes as per customer's requirement



Our Vision

The company foresees is to be a centre of excellence and bringing an exemplar shift in the field of cathodic protection and undertaking various projects of bigger magnitudes

Our Mission

Our Mission is to achieve focus our energy and resources on creating the preeminent solution for unique corrosion problems



SPECIALITIES IN CATHODIC PROTECTION PRODUCTS
ALUMINIUM ANODES, ZINC ANODES ETC.

S K INDUSTRIES

Mob-: +91 9309158015 / 8788544157
Email-: skindustries517@gmail.com

<http://www.skindustriesanodes.co.in/>
<https://www.exportersindia.com/s-kindustries-satara/>
<https://www.indiamart.com/sk-industries-satara/>

Factory Add:
Plot No. P/22, C/o Shree Balaji Transport Co.
Opp. ITI College Wai MIDC Satara
Maharashtra India -412803

Our Strength

The Strength of our well esteemed Organization lies with its translating technology innovations into strategic Impact through working in a team environment in which the experience of our people, innovative and practical technology, service, commitment, and clear communication are seamlessly interconnected to boost the performance and profitability.

